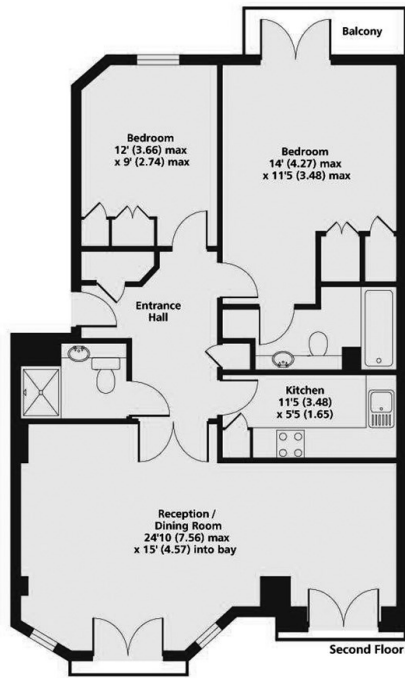


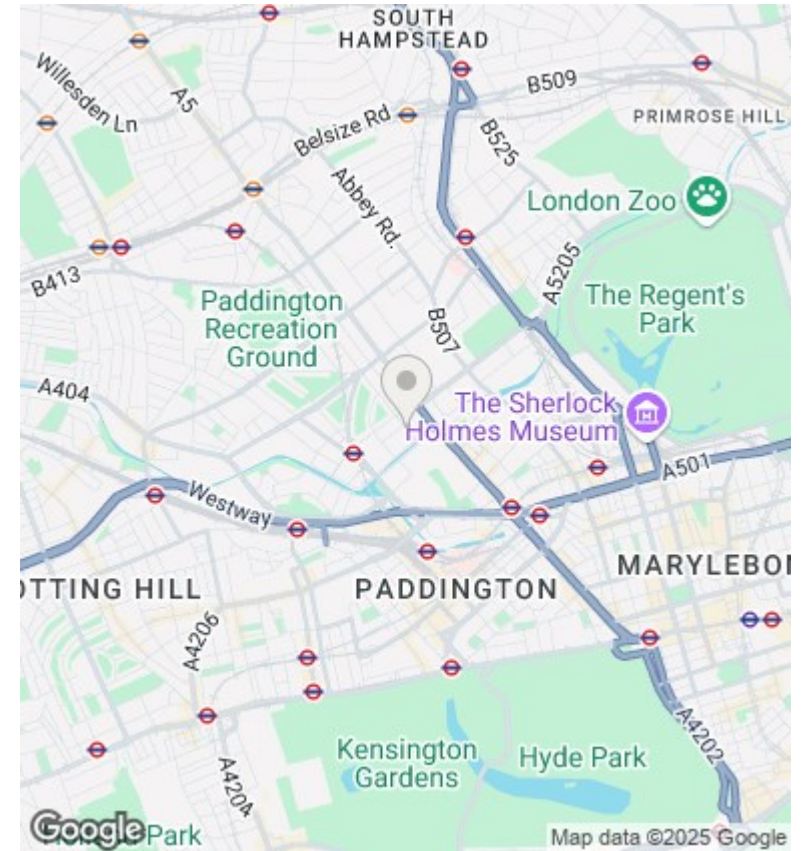
## Clarendon Court, Maida Vale, London W9

Asking Price £1,000,000

- Two bedroom
- 843 sqft / 78.3 sqm
- Located In The Heart Of Maida Vale, Moments Walk From The Amenities Of Little Venice
- Long leasehold 974 years
- Two bathroom (1 ensuite)
- Secure Underground Parking
- 24 Hour Portage
- Second Floor
- Situated In A Highly Sought After Period Mansion Block
- Lift Access



Gross Internal Area 843 sq ft 78.3 sq metres



## Directions

## Viewings

Viewings by arrangement only. Call 02070990800 to make an appointment.

## Council Tax Band

G

## EPC Rating:

Energy Efficiency Rating		
	Current	Potential
<i>Very energy efficient - lower running costs</i>		
(92 plus) <b>A</b>		
(81-91) <b>B</b>		
(69-80) <b>C</b>		
(55-68) <b>D</b>		
(39-54) <b>E</b>		
(21-38) <b>F</b>		
(1-20) <b>G</b>		
<i>Not energy efficient - higher running costs</i>		
<b>England &amp; Wales</b>	EU Directive 2002/91/EC	